

# Wi-Fi manual

Ewpe Smart App



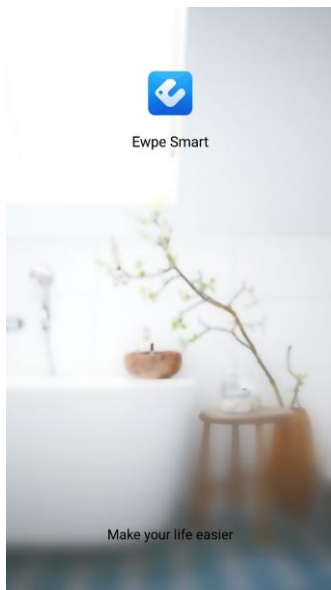
## Intelligent Control

Notes:

- 1) Make sure the smart phone or tablet computer adopts standard Android or IOS operation system. For detailed version, please refer to the APP.
- 2) The Wi-Fi function doesn't support Chinese Wi-Fi network name.
- 3) Wi-Fi 4G. The devices can be connected and controlled only in Wi-Fi and 4G hotspot modes. **5G not supported.**
- 4) Router with WEP encryption is not supported.
- 5) Software operation interface is universal and its control functions may not be completely corresponding to the unit. Software operation interface may vary along with APP upgrading or different operation system. Please refer to the actual program.

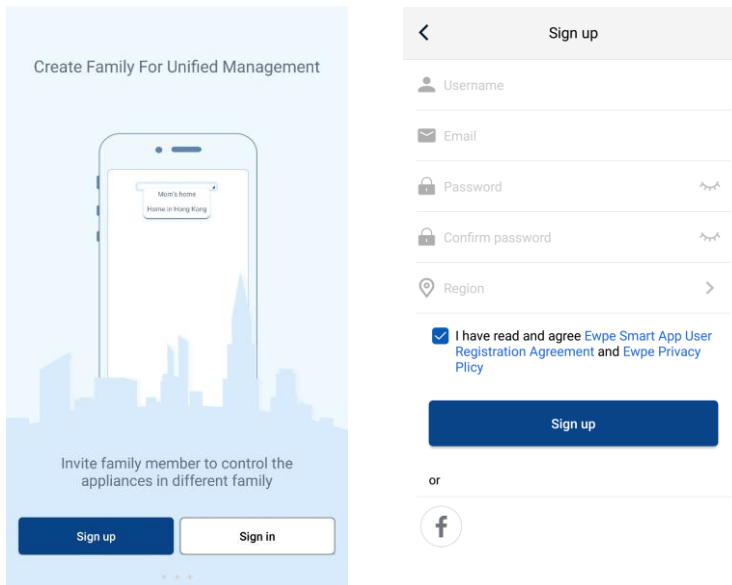
### 1. Ewpe SmartAPP

Scan the following QR code with your smart phone to download and install Ewpe Smart APP directly.



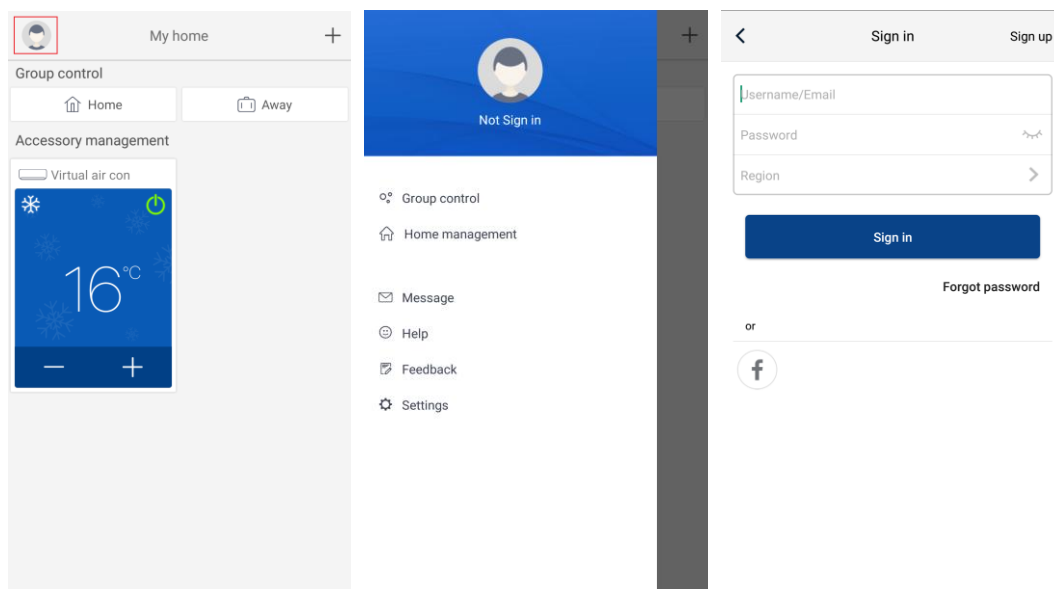
### 2. Registration

Open Ewpe Smart APP and click "Sign up" for registration.



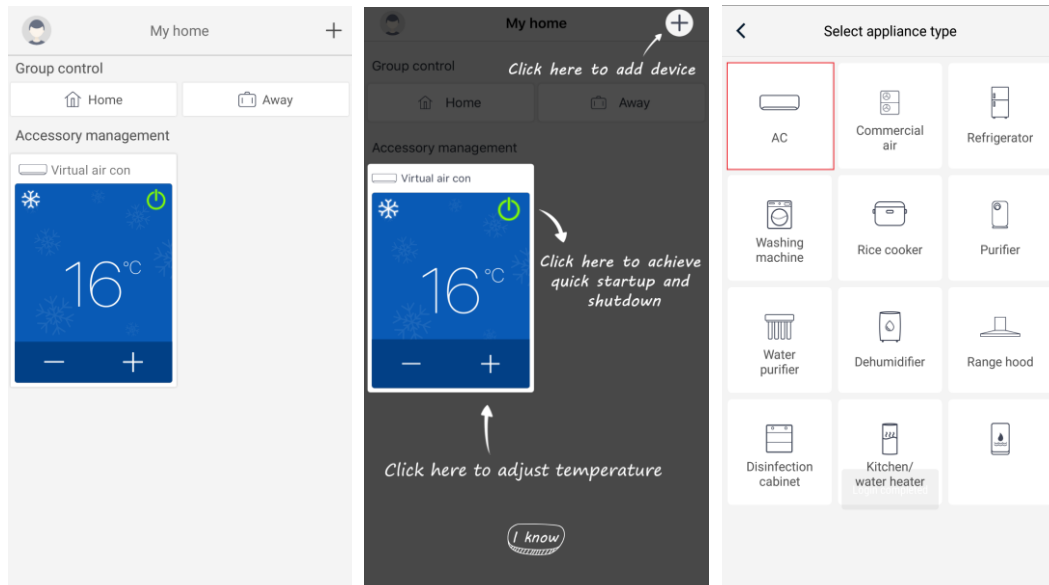
### 3. Sign in

Except sign in in the prompt interface, you can also enter the homepage and click the profile picture at the left upper corner to sign in.

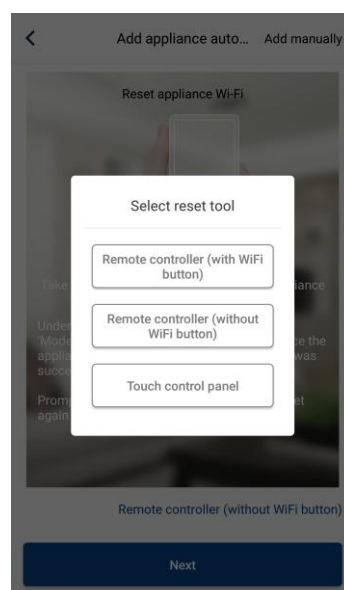


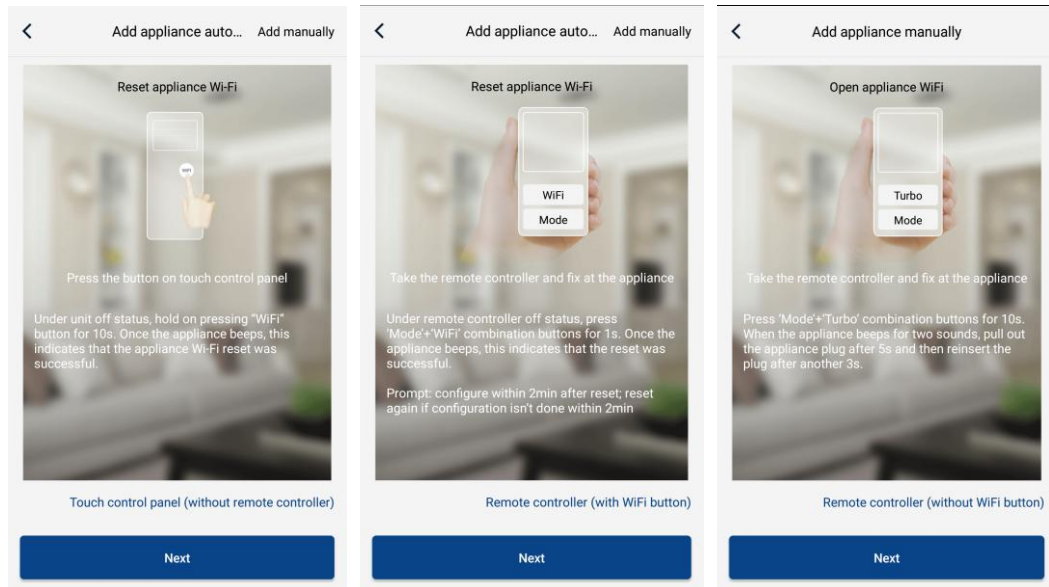
### 4. Add device

Click "+" at the right upper corner of homepage to add device.

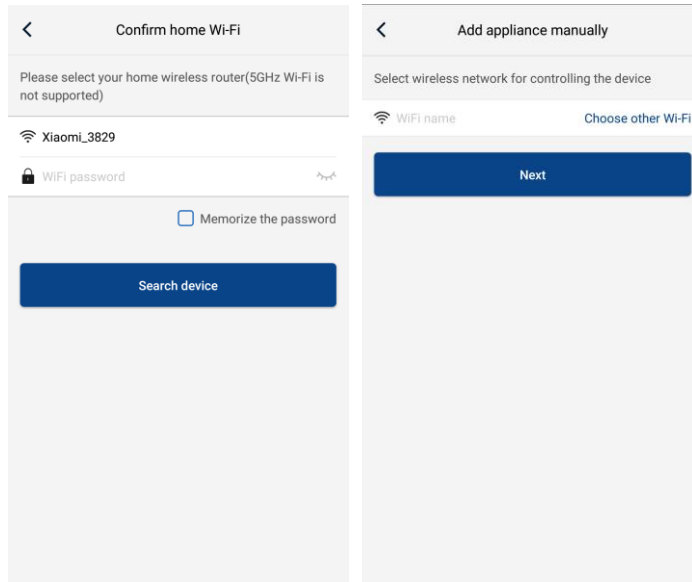


After selecting “AC”, you can select different reset tools according to actual situation. The APP interface will provide relevant operation instructions for different tools.

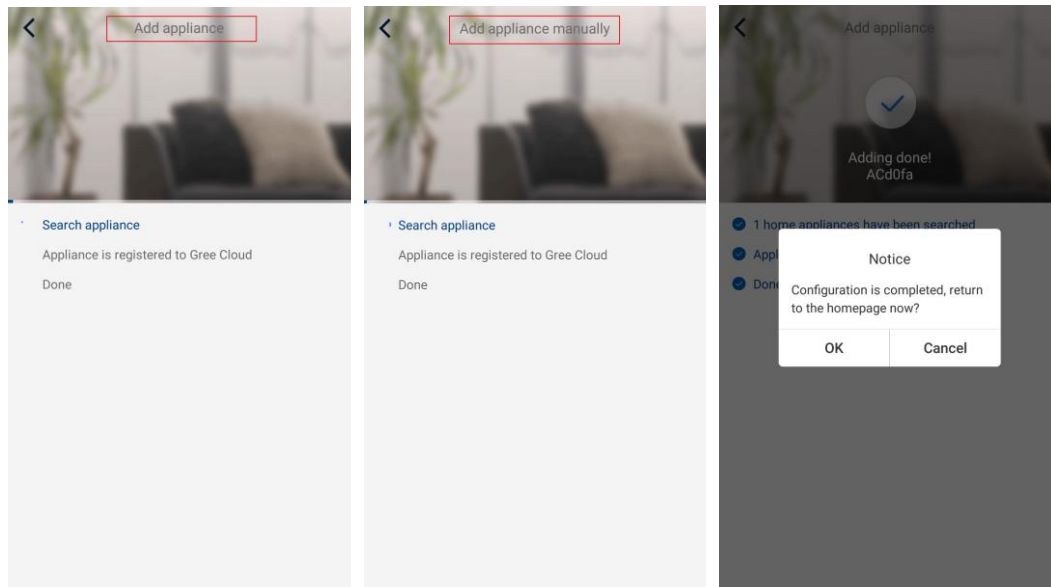




Reset the air conditioner (refer to the operation instructions in APP interface) and click “Next” to add home appliance automatically (Wi-Fi password shall be input). Or after setting and energizing the air conditioner, click “Add appliance manually” at the right upper corner to select the wireless network for controlling the device. Then confirm family Wi-Fi and arrange configuration.



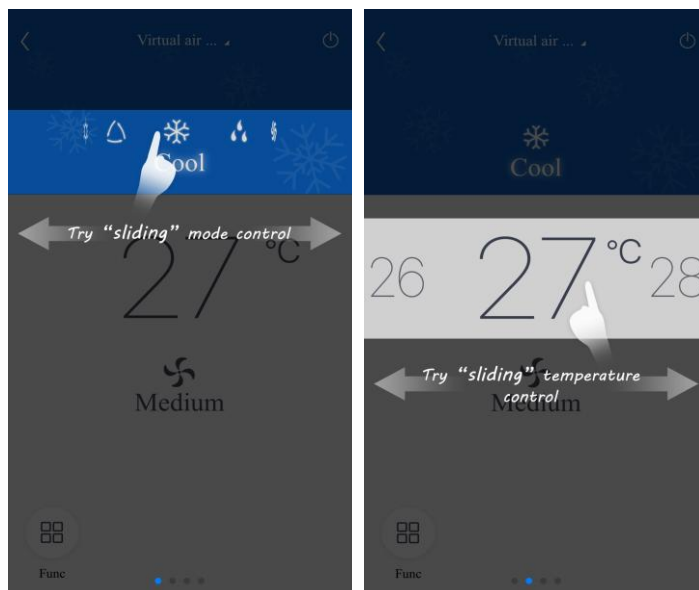
After accomplishing device reset and filling correct information, search device and arrange configuration.

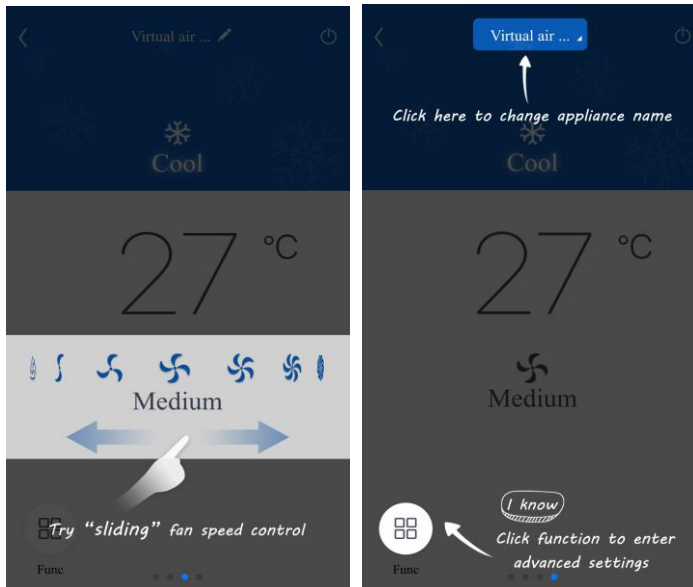


## Setting of Main Functions

In homepage, click the device in device list and enter device operation interface.

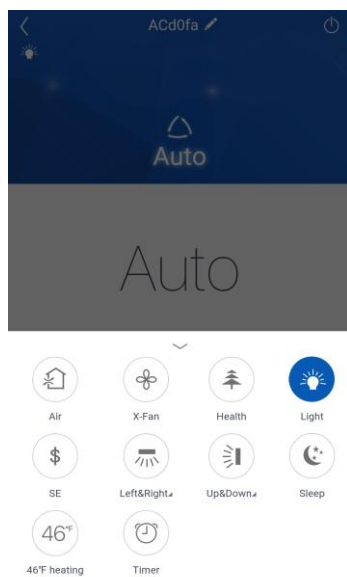
1. Set mode, temperature and fan speed





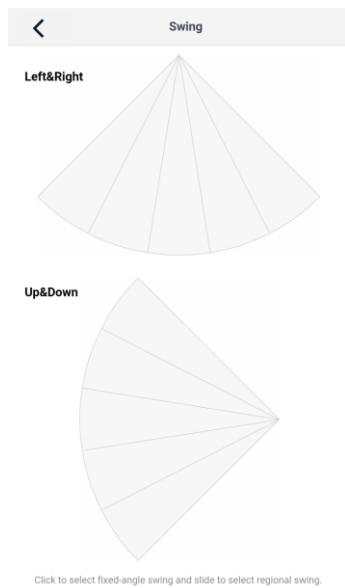
## 2. Set advance functions

Click Func at the left lower corner in device operation interface to enter advanced settings

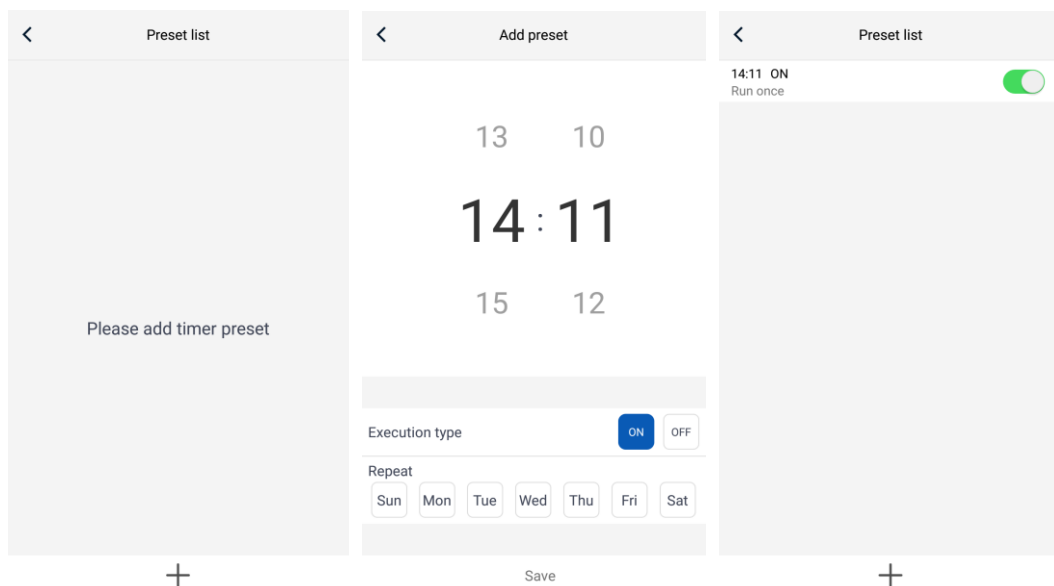


### Swing setting

Click “Up&down swing” or “Left&right swing” to turn on or turn off swing function. Click the arrow at the right lower corner of icon to enter the following interface and set swing range.



## Preset setting

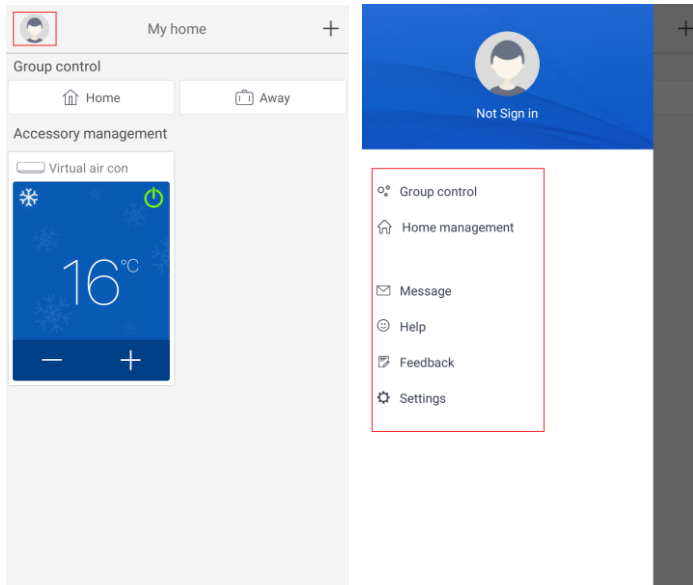


## etting of Other Functions

### 1. Menu of homepage

Click the profile picture at the left upper corner of homepage and set each function in the following menu.

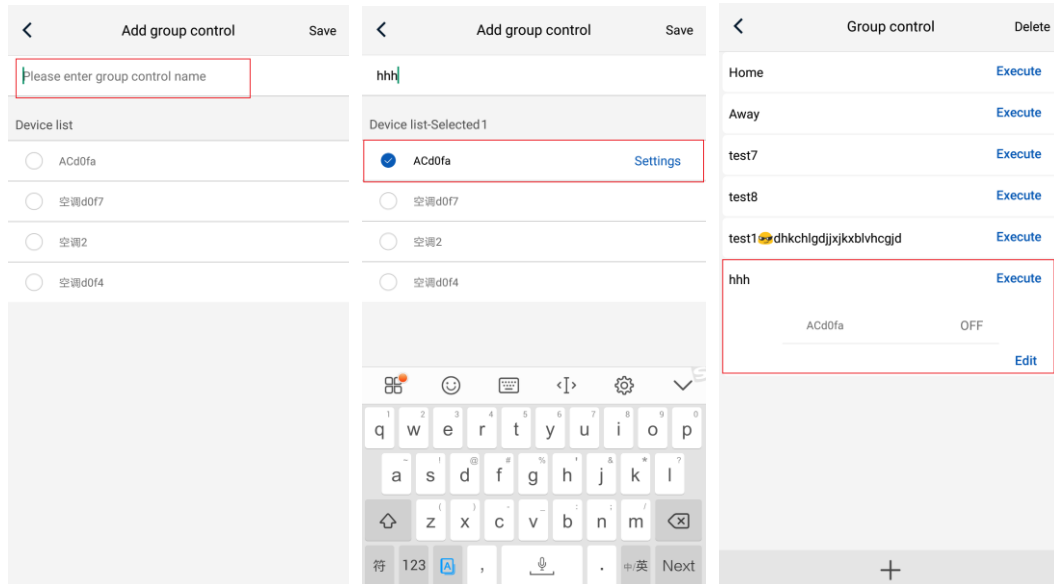




## 2. Scene

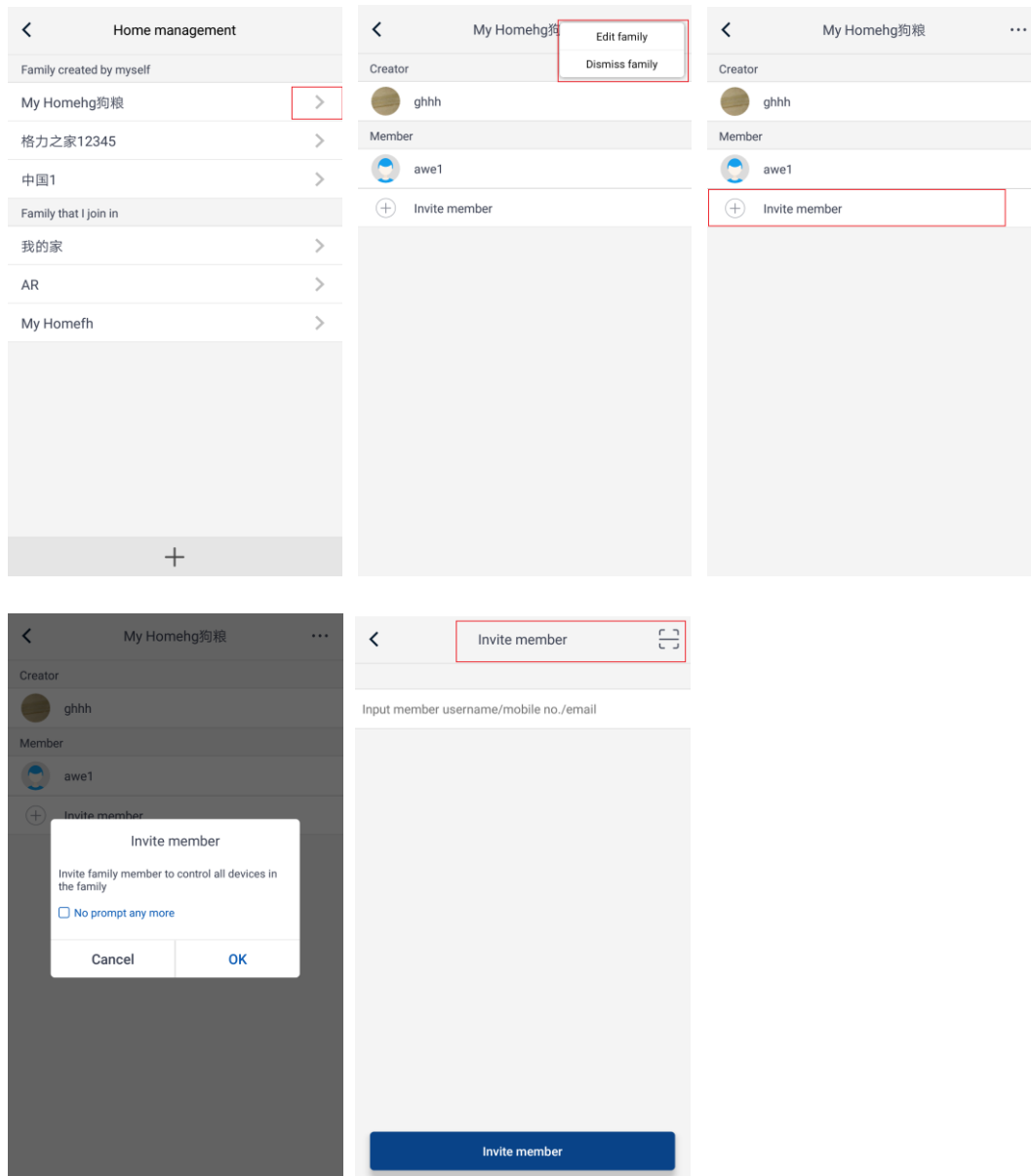
Click “Scene” and then you can operate the devices in the preset scene.

Example: Edit scene name to “hhh” and preset the devices in device list. When this scene is executed, you can execute the selected presets to the devices in the scene.



## 3. Home management

Click “Home management” to create or manage family. You can also add family members according to the registered account.



#### 4. Help

Click "Help" and view the operation instructions of the APP.

< Help	< Help	< Help
<a href="#">Account</a> Appliance Others	Account <a href="#">Appliance</a> Others	Account Appliance <a href="#">Others</a>
How to sign up >	How to add appliance >	How to feedback >
How to log in >	Why "Disconnected" is shown >	
How to find back password >	Why long distance control can not work >	
How to change password >		
What is family >		
How to create family >		
How to invite family member >		
How edit/dismiss family >		

## 5. Feedback

Click “Feedback” to submit feedback.

< Feedback

Please input your feedback with no more than 1200 characters in length

Submit

**For more information wilfa.com.**



AS WILFA  
Industriveien 25  
1481 Hagan  
Norway

[wilfa.com](https://wilfa.com)